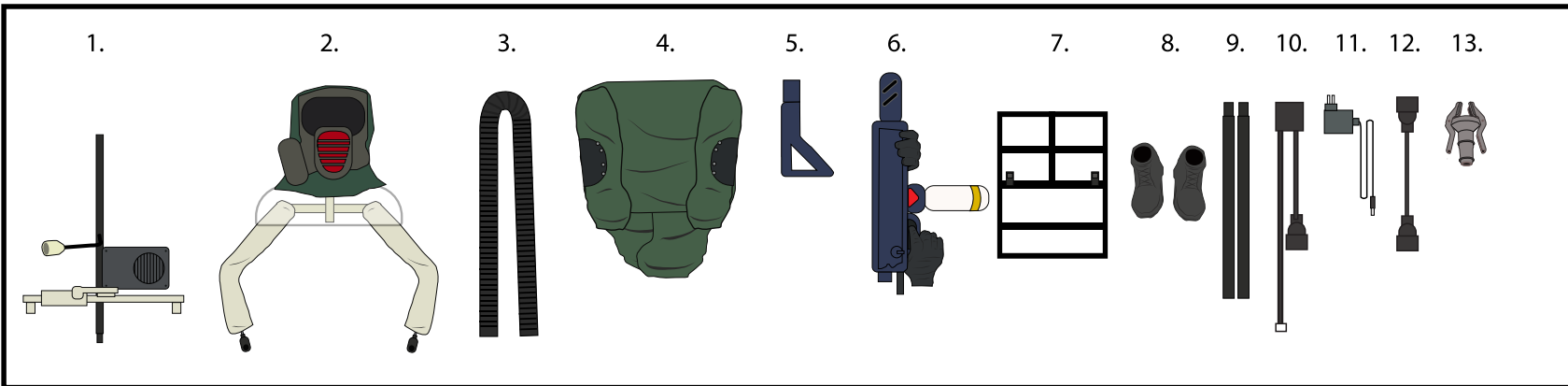


THE EXTERMINATOR™

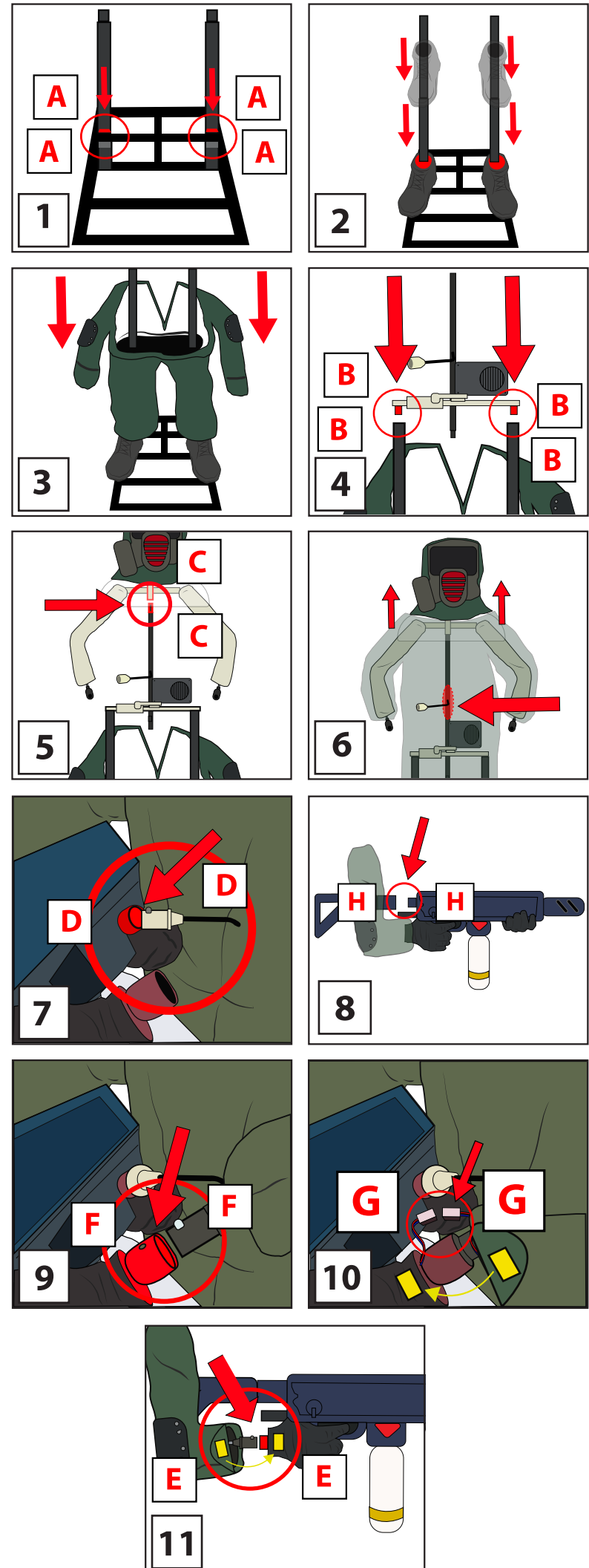
Installation and Operating Instructions

Keep all plastic and wire parts away from children.



- PARTS**
1. CONTROL BOX AND CENTER POLE
 2. HEAD AND ARMS
 3. FOG TUBE
 4. CLOTHING
 5. FLAMETHROWER STOCK
 6. FLAMETHROWER AND HANDS
 7. METAL BASE
 8. BOOTS
 9. LEG POLES
 10. FOG CORD
 11. 6V 2A ADAPTER
 12. FOG CORD ADAPTER
 13. FOG BRACKET

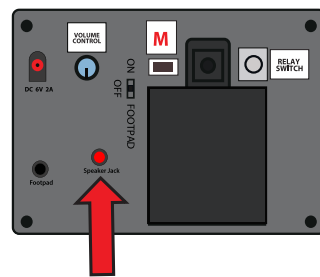
1. Insert LEG POLES onto METAL BASE. (Match A to A)
2. Slide BOOTS over the LEG POLES.
3. Slide the CLOTHING with the zipper opening facing backward over the LEG POLES.
4. Snap lock the CONTROL BOX AND CENTER POLE onto the UPPER LEG POLES. (Match B to B)
5. Snap lock the HEAD AND ARMS to the CONTROL BOX AND CENTER POLE. (Match C to C)
6. Pull the CLOTHING upward over the LEG POLES. Slide the CLOTHING over the center snap lock pole located on the CONTROL BOX AND CENTER POLE so it sticks through the opening in the front of the clothing.
7. Snap Lock the FLAMETHROWER to the ARM BRACKET. (Match D to D)
8. Connect the FLAMETHROWER STOCK to the FLAMETHROWER. (MATCH H TO H)
9. Snap lock the left hand on the FLAMETHROWER to the arm on the BODY. (Match F to F)
10. Connect the wire from the left hand to the wire from the left sleeve and attach the hook and loop fastener from the sleeve to the hand. (Connect G to G)
11. Snap lock the RIGHT arm to the hand on the flamethrower and attach hook and loop fastener on the clothing to the hand. (Match E to E)



OPTIONAL EXTERNAL SPEAKER SET UP

EXTERNAL SPEAKER IS NOT INCLUDED. MUST BE PURCHASED SEPARATELY.

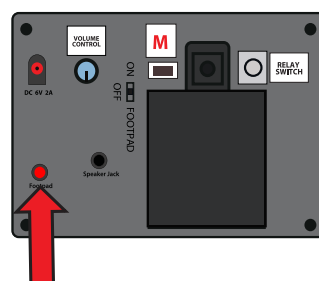
1. Plug speaker cord into the jack labeled SPEAKER JACK located on side of the control box.
2. Use volume knob on external speaker to control volume levels.



OPTIONAL FOOTPAD SET UP

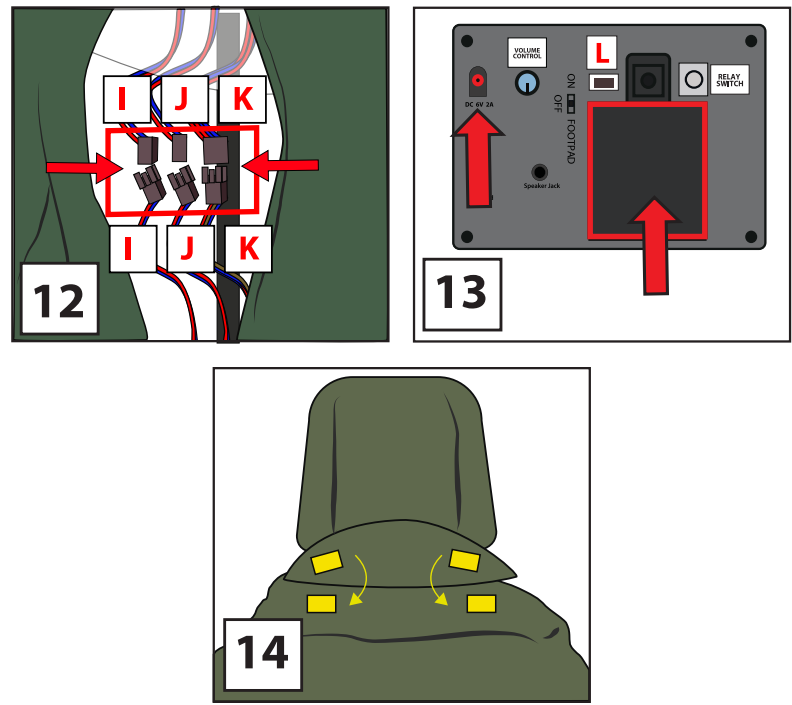
FOOTPAD IS NOT INCLUDED. MUST BE PURCHASED SEPARATELY.

1. Insert the cable from optional footpad into the jack labeled FOOTPAD on the control box.
2. Place the switch in the FOOTPAD position to enable FOOTPAD activation.
3. Step on the FOOTPAD to activate the scary sequence!



* Footpads and adapters are sold separately and can be purchased at www.tekkyaccessories.com

- Connect the wires inside the clothing to the wires from the CONTROL BOX. (Connect I to I), (Connect J to J) and (Connect K to K)
- Insert 6V 2A adapter (included) or 4 AA batteries not included into the CONTROL BOX. After FOG SET UP, move the switch to the ON position. Move in front of the item or make a loud sound (clap) to activate the item. Turn the item off when not in use.
- Attach hook and loop fasteners on the back of the hood to the back of the CLOTHING and proceed to FOG SET UP. When fog set up is complete, close the zipper located on the back of the item.



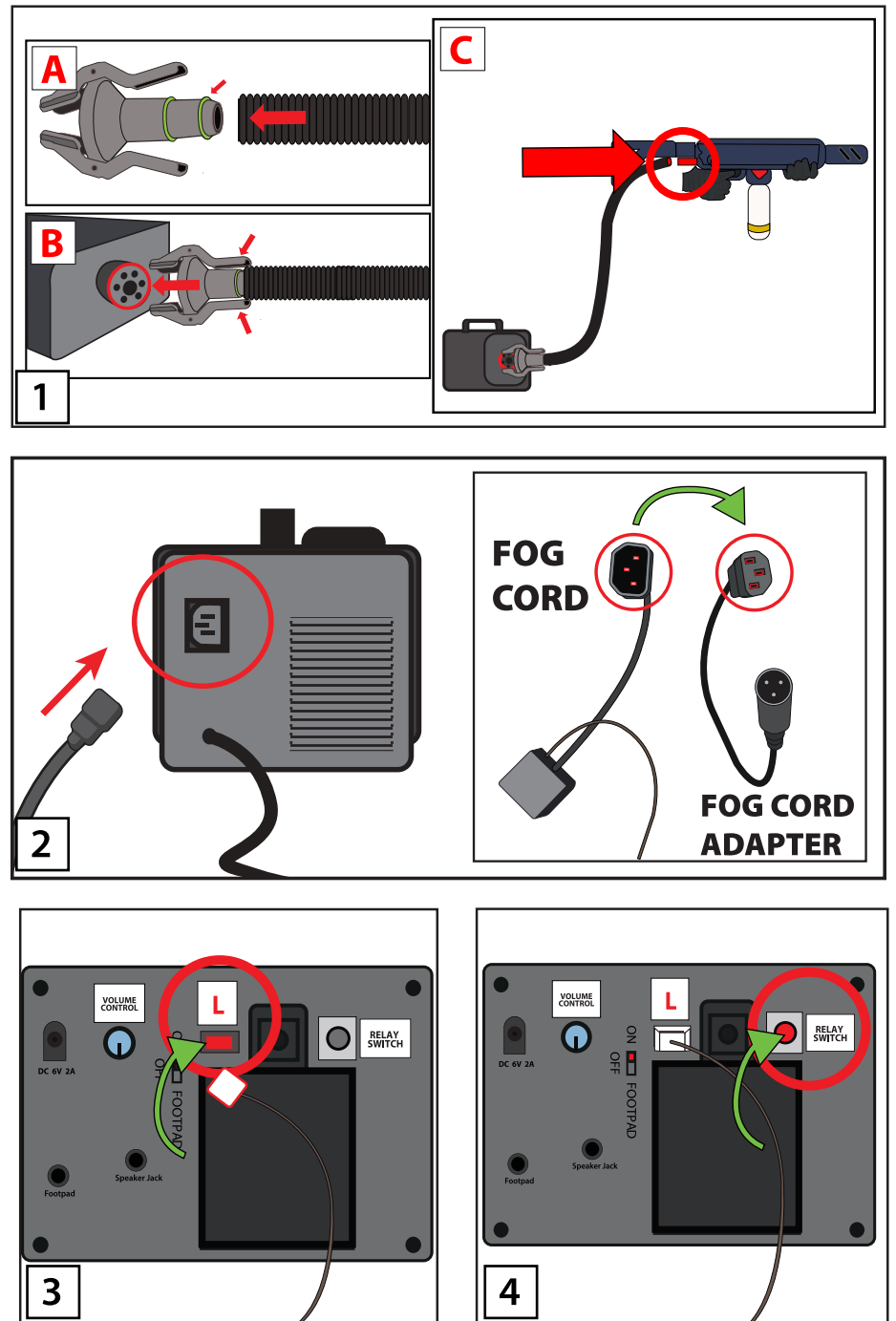
FOG MACHINE SETUP

Your FOG MACHINE (400 or 1000 watt) can be used in conjunction with THE EXTERMINATOR.

FOG MACHINE IS NOT INCLUDED. MUST BE PURCHASED SEPARATELY.

ONLY ATTACH A FOG MACHINE AS INSTRUCTED BELOW. ** MAKE SURE THE EXTERMINATOR IS SET TO THE "OFF" POSITION AND YOUR FOG MACHINE IS TURNED OFF**

- Slide FOG TUBE over the FOG BRACKET as seen in illustration A. The fog hose will click in place over the raised surface of the FOG BRACKET. (see illustration A)
 - Depress the lever arms of the FOG BRACKET and attach to the fog machine nozzle. (see illustration B)
 - Connect the FOG HOSE to the FLAMETHROWER. (see illustration C)
- Plug the FOG CORD into your fog machine. If the fog cord plug does not fit, see illustration 2A.
 - Plug the FOG CORD into the FOG CORD ADAPTER. Plug the FOG CORD ADAPTER into your fog machine.
 - Plug the other end of the FOG CORD into the jack labeled L on the CONTROL BOX. (Match L to L)
 - Make sure your fog machine is heated up properly, turn your fog machine ON, and then turn THE EXTERMINATOR'S switch to the "ON" position. Make a loud sound (clap) or move in front of the item. If no fog appears, press the relay switch on the CONTROL BOX.



visit us at tekkydesign.com
Requires 6V 2A ADAPTER (included)
or 4AA batteries (not included)

ALL NEW MATERIALS:
METAL, FOAM, PLASTIC, POLYESTER
Surface washable only.

THE EXTERMINATOR™ is a trademark of Tekky.
Copyright © 2021 Tekky.
All Rights Reserved.
MADE IN CHINA

WARNING
Only for use with 400 watt (preferably) or 1000 watt fog machines.
Do not use with any other fog machine.
Manufacturer does not guarantee the performance of the fog machine.
Make sure to use the supplied fog machine components when hooking up to the fog machine, or damage could occur.

BATTERY INSTRUCTIONS AND CAUTIONS
Battery installation and removal should be performed by an adult.
Remove batteries when not in use.
Use only batteries recommended in the instructions.
Do not mix new and used batteries.
Do not mix alkaline, carbon-zinc, nickel-cadmium, rechargeable or different types of batteries.
Be mindful to insert batteries with the correct polarity (+/-) as indicated.
Remove all exhausted batteries.
Rechargeable batteries are only to be charged under adult supervision.
Rechargeable batteries are to be removed from the item before being charged.
Non-rechargeable batteries are not to be recharged.
The supply terminals are not to be short-circuited.
Always dispose of exhausted batteries properly.
Do NOT dispose of batteries in fire, they may leak or explode.

Warning! This item is not a toy. For decoration only. Small parts, choking hazard.
This product is intended for use by persons 15 years of age and older.
Not intended for use by children ages 14 years and younger.

WARNING
DO NOT TURN ITEM ON UNTIL YOU HAVE COMPLETELY FINISHED ASSEMBLY.
STAY CLEAR OF ITEM WHILE OPERATING.
DO NOT PLACE ITEM ON UNEVEN GROUND.
DO NOT PLACE WEIGHT ON ITEM WHILE IN OPERATION.



DO NOT RETURN THIS ITEM TO THE STORE!
If experiencing technical difficulties, please go to z for assistance.

